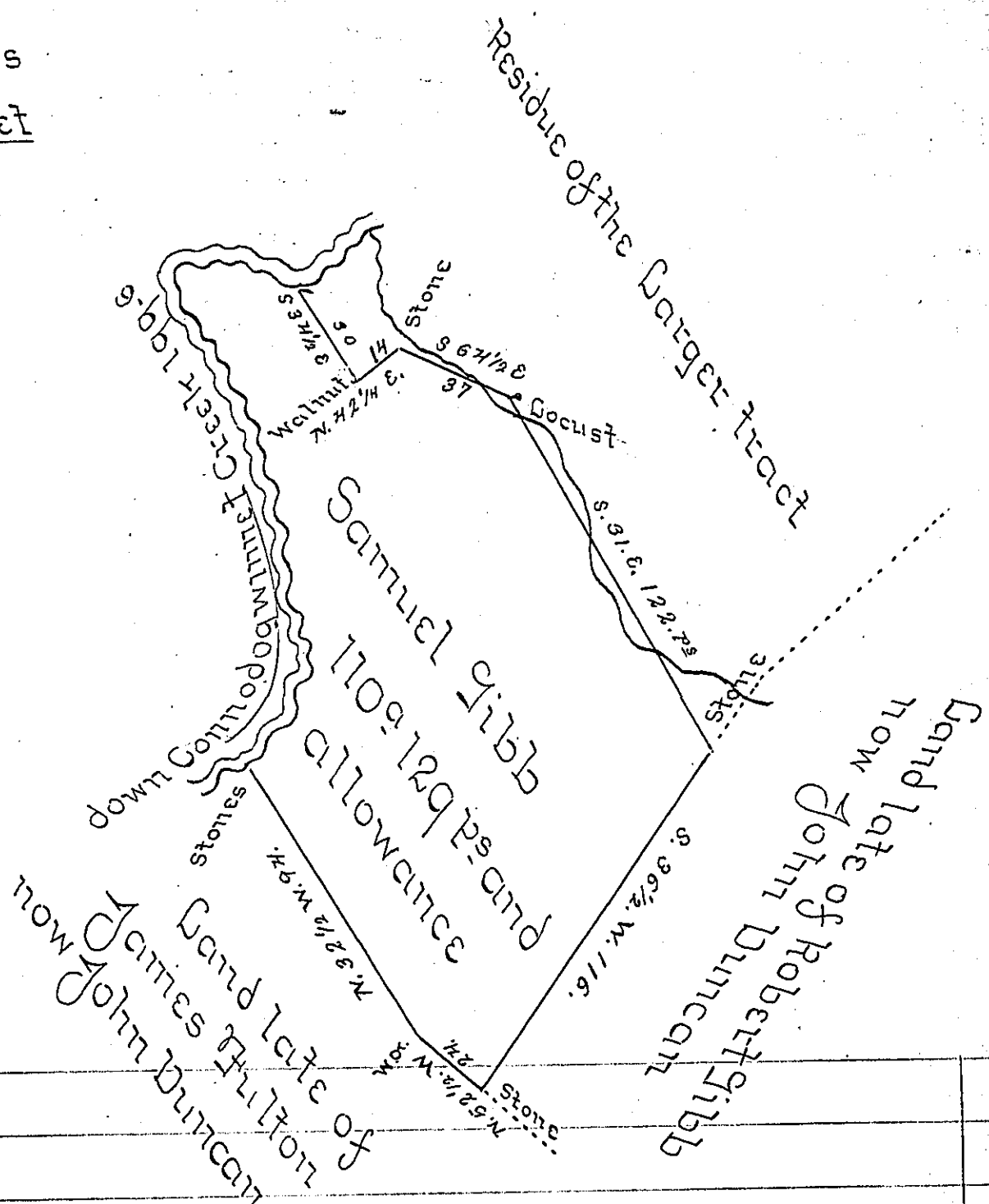


Courses & distances  
down Connodogenet  
Creek

- N. 50. E. 12
- N. 28. E. 22
- N. 27 1/2 W. 18
- N. 13. W. 26
- N. 17 1/2 W. 45
- N. 37. W. 17
- N. 50. W. 12
- N. 7 E. 12
- N. 87. E. 11.6
- S 68. E. 27

199.6



A Draught of a tract of Land situate in Hopewell Township Cambd County Containing 1109 1/2 ac and the usual allowance of six PCent for roads &c of being part of a larger tract of 206<sup>as</sup> 17<sup>ps</sup> and allowance surveyed in pursuance of an Application <sup>granted to Saml Gibbs</sup> dated the first day of December 1766 No 2025 Resur'd and Divided the 5<sup>th</sup> Day of March 1807

W<sup>m</sup> Wheeler D.S.

To Saml Cochran Esq: Sr

*IN TESTIMONY* that the above is a copy of the original remaining on file in the Department of Internal Affairs of Pennsylvania, made conformably to an Act of Assembly approved the 16th day of February, 1833, I have hereunto set my Hand and caused the Seal of said Department to be affixed at Harrisburg, this thirtieth day of March 1905.

*Geo A Perry*  
Secretary of Internal Affairs.